



TITANUS® – EARLIEST POSSIBLE FIRE DETECTION FOR THE FASTEST POSSIBLE RESPONSE

The TITANUS® family of air sampling smoke detectors covers medium to high-sensitivity ASD applications as well as a wide range of extreme applications, without compromising high levels of sensitivity and performance.

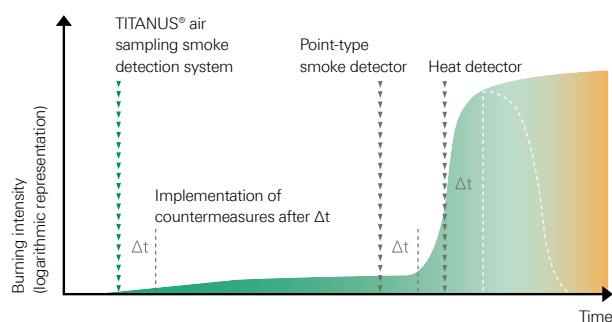
General Features

- HPLS for standard to very high sensitivity
- LOGIC·SENS to ensure accuracy and prevent false alarms
- PIPE-GUARD patented air flow monitoring system
- Designed for the harshest environments, with a wide range of accessories for special applications
- Free software: TITANUS® *PipeXpress* automates system design with just a few mouse clicks

Options

- System coverage up to 32,280 sq ft per detector module
- Optional 2nd detector module for cross-zoning alarm verification or double coverage area
- ROOM-IDENT version provides individual indication for up to 5 separate rooms
- Up to 984 ft pipe length and up to 100 holes per detector module
- Smoke level bar graph display
- Up to 3 alarm levels for a tiered alarm concept
- Ethernet (TCP/IP)/SNMP/data logger option
- Operating temperature: -40°F to +140°F
- Sound pressure as low as 23 dB(A)

Fire development and detection



WAGNER®

TITANUS® Product Family

Overview



	TITANUS® PRO-SENS®			TITANUS® PRO-SENS®		
	basic features			2x2 alarms		
Type	TP-1-U	TP-1-F-U	TP-1-SL-U	TP-4-U	TP-4-F-U	TP-4-SL-U
Description	standard	cold storage	silent	standard	cold storage	silent
Max. "Main Alarm" Sensitivity						
Option 1) 0.005% obsc./ft (0.015% obsc./m)		✓			✓	
Option 2) 0.03% obsc./ft (0.10% obsc./m)		✓			✓	
Option 3) 0.15% obsc./ft (0.50% obsc./m)		✓			✓	
Max. No. of Detector Modules	2			2		
Max. No. of Aspiration Holes	2x63		1x100 or 2x72	2x63		1x100 or 2x72
Max. Area of Coverage (System Limitation)	2 x 32,280 sq ft (2 x 3,000 sqm)			2 x 32,280 sq ft (2 x 3,000 sqm)		
Max. Pipe Length	2 x 984 ft (2 x 300m)			2 x 984 ft (2 x 300m)		
Cross-Zoning Alarm Verification with 2nd Detector Module		✓			✓	
No. of Alarm Levels per Detector Module	1			2		
No. of Output Relays (1 A/30 VDC)	4			6		
Bar Graph Smoke Level Indicator	-			-		
Supply Voltage 24 VDC (14 to 30VDC)		✓			✓	
Supply Voltage 24 VDC (16 to 30VDC)		-			-	
Current Consumption (Quiescent, 24V), max. 240mA*		✓			✓	
Current Consumption (Quiescent, 24V), max. 105mA*		-			-	
Operating Temperature -4°F to +140°F (-20°C to +60°C)	✓	-	✓	✓	-	✓
Operating Temperature -40°F to +140°F (-40°C to +60°C)	-	✓	-	-	✓	-
Sound Pressure Level (ISO 3744) as low as 45dB(A)	✓	✓	-	✓	✓	-
Sound Pressure Level (ISO 3744) as low as 23dB(A)	-	-	✓	-	-	✓
Relative Humidity 10 to 95% Noncondensing		✓			✓	
IP Rating: Standard (Option)	IP 20 (optional: IP 52)			IP 20 (optional: IP 52)		
Ethernet / SNMP / Data Logger	-			optional		
Binary Data Logger		✓			✓	
Approvals	UL, ULC, FM, CPD (VdS, EN 54-20), ISO 7240-20, LR, GL, NF and others, depending on version					

* Maximum current consumption at standard fan voltage, can be lower depending on version



TITANUS [®] <i>TOP-SENS</i> [®] /net			TITANUS [®] <i>TOP-SENS</i> [®]			TITANUS <i>MICRO-SENS</i> [®]		
2x3 alarms			fully equipped			small coverage area		addressable ports
TP-5-U	TP-5-F-U	TP-5-SL-U	TT-1-U	TT-1-F-U	TT-1-SL-U	DM-TMV-(B-)xx-U	DM-TMV-(B-)xx-F-U	DM-TMV-R(B)-xx-U
standard	cold storage	silent	standard	cold storage	silent	standard	cold storage	ROOM-IDENT
	✓			✓			–	–
	✓			✓			✓	✓
	✓			✓			✓	✓
	2			2			1 (integrated)	1 (integrated)
	2x63	1x100 or 2x72		2x63	1x100 or 2x72		8	5
	2 x 32,280 sq ft (2 x 3,000sq m)			2 x 32,280sq ft (2 x 3,000sq m)			4,300sq ft (400sq m)	
	2 x 984 ft (2 x 300m)			2 x 984ft (2 x 300m)			164ft (50m)	
	✓			✓			–	–
	3			3			2	2
	8			8			2 (option: +5)	2 (option: +5)
	–			✓			optional	optional
	✓			✓			–	–
	–			–			✓	✓
	✓			✓			–	–
	–			–			✓	✓
✓	–	✓	✓	–	✓	✓	–	✓
–	✓	–	–	✓	–	–	✓	–
✓	✓	–	✓	✓	–	✓	–	✓
–	–	✓	–	–	✓	–	–	–
	✓			✓			✓	✓
	IP 20 (optional: IP 52)			IP 20 (optional: IP 52)			IP 54	IP 54
	optional			optional			optional	optional
	✓			✓			✓	✓

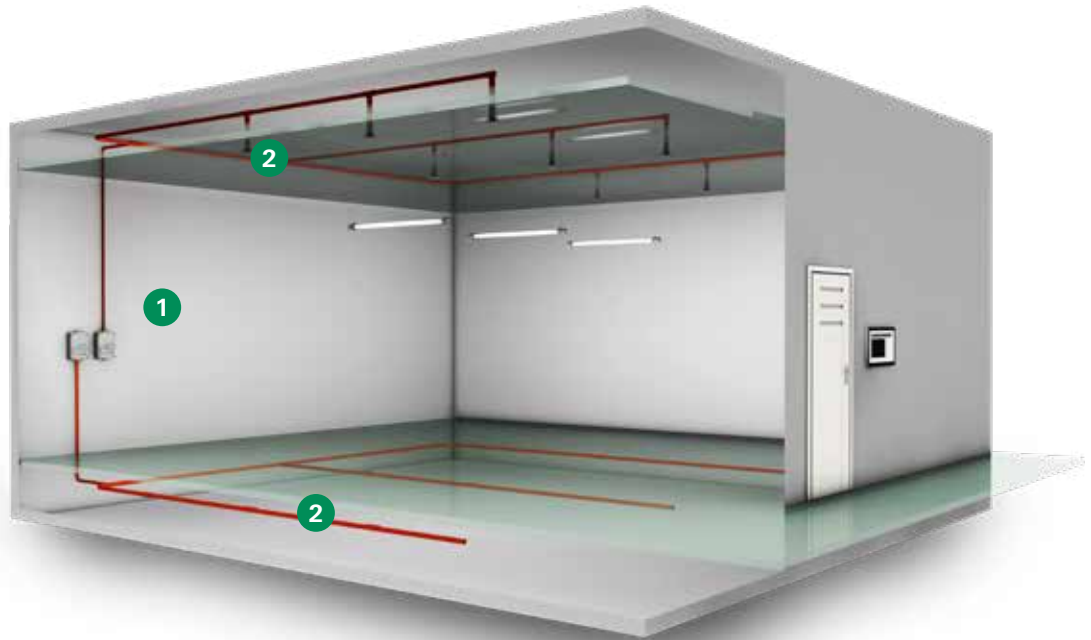
ons, see data sheets or contact WAGNER. TITANUS *MICRO-SENS*[®] without FM approval.

on and/or if equipped with 1 detector module only

TITANUS®: Sniffs out smoke faster than anything else on the market

TITANUS® is a highly sensitive fire detection system that continuously samples the air, sensing smoke up to 2000 times faster than traditional detectors. In fact, TITANUS® is so accurate, you never have to worry about a false alarms.

The TITANUS® air sampling smoke detection system **1** takes air samples through a pipe system **2** in the protected area.



Technology

TITANUS® offers a modular design that facilitates cost-effective solutions for a wide range of specialized application requirements. The system integrates High-Power-Light-Source (HPLS) technology coupled with our patented LOGIC-SEMS fire pattern recognition algorithms, and a wide range of custom accessories. Combined, these maintain elevated levels of sensitivity and immunity to false alarms even in challenging environments such as heavy industry and recycling plants. An optional, second plug-in detector module allows a single air sampling unit to economically monitor two separate areas, or support cross-zoned alarm verification.

Key Features

TITANUS® air sampling smoke detectors incorporate up to 3 alarm levels for a tiered alarm concept, and include dry contacts for connection to any fire panel as well as free slots for inserting optional

accessory modules. Our unique PIPE-GUARD advanced airflow monitoring technology monitors all system airflow through the piping and detection chamber, sensing changes of as little as +/-10%.

Pipe Planning

TITANUS® *PipeXpress* offers a cutting-edge ASD pipe planning software, setting new standards by ensuring fast and easy pipe design. This allows highly reliable ASD planning with just a few mouse clicks.

Full-Service Installation & Support

Consistent system architecture, together with common installation and service protocols throughout the entire TITANUS® product line, round out the integrated TITANUS® concept, resulting in substantial benefits for ESDs, installers and end users.

Contact WAGNER's US offices today:

WAGNER Fire Safety, Inc.

20 Park Plaza, #469
Boston, MA 02116

Phone: +1. 781. 899 9100
Email: info@wagner-us.com
www.wagnergroup.com

WAGNER®